



FYRESAFE

Coated FR Batts



Trafalgar **Fyre** fire stopping range includes:

Sealant | Pillows | Mortar | FR Batts

FR Collars | FR Access Panels | Pipe Wraps

FyreWrap Duct Wrap | FR Downlight Covers

Intumescent Dampers | Fire Door Hardware

Fire Rated Board and Systems | Cable Coating

FYREBOX for multiple and mixed services

*Fight Fire With **Fyre***

tfire.com.au

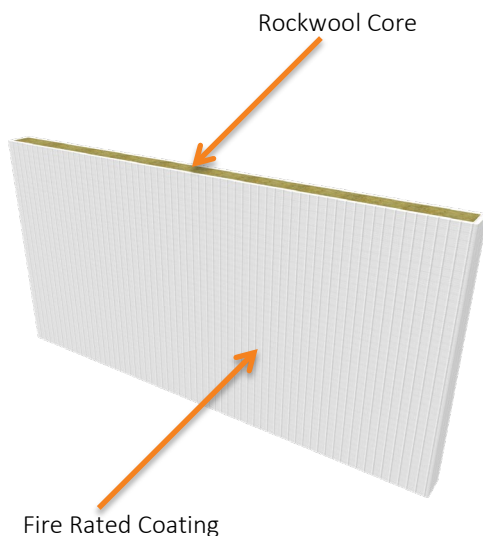
30072019

FYRESAFE

Coated FR Batts

Product Overview

Trafalgar FyreSafe FR Batts are a coated mineral fibre batt, designed for use as a fire seal for service penetrations. Consisting of a high density fibrous lamella core, sealed on both sides with a flexible fire rated ablative coating, FyreSafe Batts offer a high level of fire protection, along with an effective smoke and acoustic seal.



FyreSafe Batts are used to seal various service penetrations in fire rated walls or floors located in dry environments, providing a fire rating for up to 4 hours as required by the National Construction Code.

FyreSafe Batts have been fire tested in numerous configurations and with a multitude of service penetration types in accordance with AS1530.4. FyreSafe Batts are simple to cut and install, making them an ideal solution. Many systems require multiple layers of FyreSafe Batts.

Warning: FyreSafe Batts are non-load bearing.

To maintain market leadership, Trafalgar stay up to date with the latest technologies and trends in passive fire protection and contemporary construction techniques. **We are 70 years strong and still innovating!**

FYRESAFE

Coated FR Batts

Product Overview

APPLICATION:

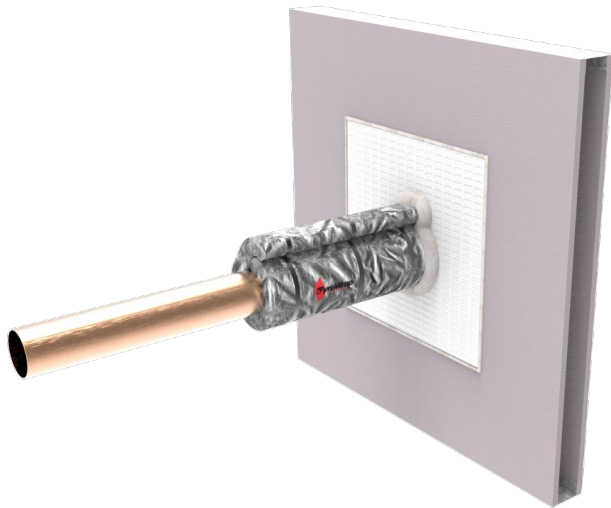
Trafalgar FyreSafe Batts are suitable for complex penetrations and can be cut to permanently seal around various services. Both the services and the perimeter of the opening must be sealed with FyreFlex Fire Rated Sealant.

SUITABLE FOR:

Trafalgar FyreSafe Batts are a permanent solution and no additional cuts can be made for additional services once electrical or data cables are installed, due to WH&S requirements. To allow for easy additional installation or removal of services, please refer to Trafalgar Fyrebox Maxi or Fyrebox Mini product overview.

SPECIFICATION:

For permanent sealing of service penetrations, install Trafalgar FyreSafe Batts in accordance with AS1530.4 and Trafalgar's installation instructions. When full insulation rating (temperature rise) is required for the FRL, FyreWrap will be needed to be wrapped on ductile services such as cable trays and steel and copper pipes for example.



Copper Pipes

FRL -/120/120 with FyreWrap Insulation System *



FYRESAFE

Coated FR Batts

Technical Specifications

PRODUCT DESCRIPTION

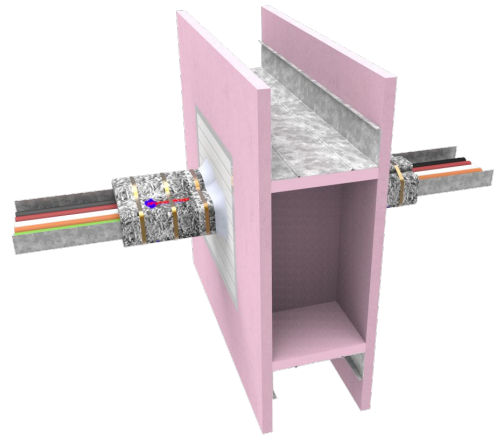
Fire Rating	2 hours fire rating (For full FRL, FyreWrap insulation will be required for some services. For 4 hour fire protection please contact Trafalgar).
Colour and Appearance	Fibrous laminar core, sealed with white ablative coating on both sides.
Testing	Tested and approved in accordance with AS1530.4.
Storage and Handling	FyreSafe FR Batts should be stored in a cool, dry location.
Installation	FyreSafe Batts can be simple cut to size (5 to 10mm oversize) with a serrated knife, allowing a compression fit into the penetration. A 5mm bead of FyreFlex Fire Rated Sealant is then applied to the perimeter and all joints and services to provide an effective smoke and fire seal. Trafalgar recommends the use of z-brackets when installing batts. Please refer to our YouTube channel (Trafalgar TV) for installation videos or to Trafalgar's written instructions.

Safety	Please refer to product MSDS for full safety information.
---------------	---

Environment	Contains no asbestos.
--------------------	-----------------------

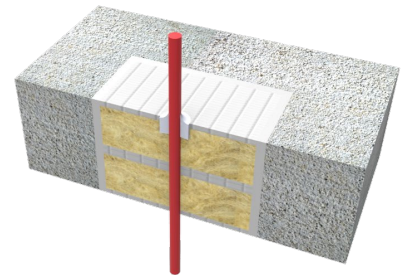
IMPORTANT NOTES

1. Trafalgar FyreFlex Sealant to be used around openings.
2. If full insulation rating (temperature rise) is required for the FRL, FyreWrap will need to be wrapped on ductile services such as cable trays, steel and copper pipes for example.
3. Not suitable for use around plastic pipe and plastic conduits (Trafalgar Maxilite Board and FyreChoke Collars are recommended in this case).



Cable Tray

FRL -/240/120 with FyreWrap Insulation System *



Single Cable through Floor

FYRESAFE

Coated FR Batts

Ordering Information

FyreSafe - Coated FR Batts				
Product	Product Code	Size	Weight	Asbestos Content
FyreSafe Batts	FR Batts 60mm	1000x600x60mm	7kg	0%
Fibrous	Load Bearing	Reworkable after Installation	Compression Fit	Water Resistant
Yes	No	Not recommended	Yes	No

FYRESAFE BATTS FAQ:

1. Do I need to use fire rated sealant around the perimeter of the batts as well as where the services penetrate? – **Yes, Fyreflex must be used to "paint" all edges of batt sections, and must be installed in a fillet around services as outlined in the specifications.**
2. Can I install extra services to an existing Batt installation? – **No, please contact Trafalgar for a solution.**
3. Can I step on Batts installed in a floor slab? **No, Batts are non-load bearing and measures should be taken to ensure that no one can step on one.**
4. Can I achieve acoustic separation using the batts? **Yes, the batts can achieve excellent acoustic separation (up to Rw52) for some applications. Contact Trafalgar for more information.**



Trafalgar has developed a range of **installation videos** to assist our customers. To view these step by step install videos please go to [Trafalgar TV our YouTube Channel](#).

[Subscribe](#) and you will be notified when new videos are uploaded.

Trafalgar reserves the right to change specifications without notice. Please check with your supplier at the time of order. The information contained in this brochure was correct at the time of print. E&OE. Published 07.30.2019. *Refer to Trafalgar's installation instructions.